

LightScene EV-100 series projectors

# Dynamic accent lighting and projection



**EPSON®**  
EXCEED YOUR VISION

# Make every visit memorable



Introducing the new Epson LightScene EV-100, the state-of-the-art, fit-and-forget accent lighting laser projector that simultaneously combines illumination and HD projection. By opening up new ways of displaying imagery and information, these virtually maintenance-free projectors expand visual possibilities and bring fresh, innovative solutions to many common industry applications.

Provide a deeper story behind your products  
Create personalised customer experiences

Make every visit more memorable  
Accelerate customer engagement

Change your environment to match seasonal or daily events  
Build more creative and naturally immersive spaces

## Retail solutions



## Hospitality solutions



## Entertainment solutions





# Project onto any surface

Project directly onto items or exhibits, change colours and designs, add explanatory notes and really tell a story. Create new and unique display by projecting information or video directly onto any object.



## Create endless visual possibilities

Turn any surface into a totally customisable and interactive digital space and redefine any environment with ground-breaking animated displays. Unleash a world of creativity and inspire new levels of engagement. See things in a new light.

The Epson LightScene projector fits your industry, removes barriers and creates richer customer experiences. The spotlight design blends in seamlessly and thanks to laser technology this fit-and-forget solution is virtually maintenance-free.



## Project onto any item, transform any surface

In addition to conventional wall projection, you can project onto floors, ceilings, tables or any other surface just by changing the projector angle. This creates new value by making maximum use of your whole space with entertainment on every surface.

## Match any environment

The spotlight-style design integrates seamlessly into any hospitality or retail environment and can even be added to an existing lighting track with the optional mount. The projector angle can be changed to face in any direction, offers portrait or vertical viewing and enables image sizes up to 133" to make the biggest impact.



## Keep space free

When it's not being used, the Epson LightScene EV-100 projector blends into the background and doesn't create any dead space like a flat panel display.

## Make a bigger impression

Take your displays into the next dimension by using multiple projectors with edge blending functionality. Create fantastic displays in any shape you want and forget the constraints of square images and bezels.

# Bring displays to life



Enhance customer experiences in any retail environment with the Epson LightScene projector. Add entertainment and value, brighten the corporate or entertainment space and share information in new, eye-catching ways.

## Inviting ambient spaces

Take immersive retail experiences to the next level by combining motion graphics and projection mapping on walls, products and display plinths.

## Tell a better story

Bring interactive pick and place technology to the point of sale using dynamic table top and back wall projections. For example, trigger dynamic content in response to objects placed on a table to highlight product details and unique features.

## Project your message

Personalise shop window displays by camera-tracking profiles of passing audiences, projecting instant messages and mapping different designs onto mannequins.

## Match projections to events

Bring hospitality environments to life with vibrant daily or seasonal event themes projected on floors, walls and counter surfaces. Tailor displays to different day and night events, way-finding signage or promotional details, and share information in multiple languages.

## Personalise customer experiences

Show customers more and make experiences truly entertaining and interactive. For example, display chosen footwear designs by projection mapping them instantly onto the product and giving a personal virtual representation of style and colour.

Or show animated internal details of a car by dynamic projection mapping the engine and other interior details onto the body. This provides a 360° visual spectacle to engage browsing customers and helps them to visually experience different important aspects of the vehicle.

# Engage and entertain

The Epson LightScene projector brings total immersion to any venue. It adds a whole new dimension to sharing information by projecting directly onto objects, adding dynamic information alongside or simply acting as a spotlight or ambient lighting.

## Make spaces naturally immersive

Achieve more personalised, memorable dining experiences by projecting guest messages, menus, event information and details of special dishes onto the table, and illuminating individual plates with spotlights.

## Add new dimensions

Apply virtual content to attractions such as museums and galleries by restoring original designs to ancient artifacts via projection mapping, or spotlight an exhibit and add engaging information beside it.

## Accelerate customer engagement

Combine interactivity with reactive content to create unique, versatile spaces that foster conversations. Display real-time information about items, project promotional offers onto surfaces and special greeting messages onto tables.



Inject entertainment and communication into your bar or restaurant with unique, individually tailored displays.

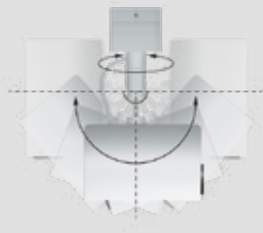


# Add functionality

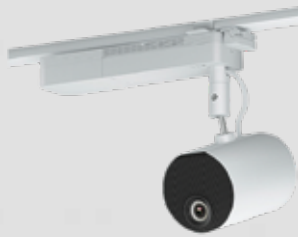
Project onto any surface, including floors, ceilings and walls, at any angle from 360° horizontal to 180° vertical. Add colours and shape filters to your projected images and deliver a diverse range of visual effects.

## Easy installation

A variety of installation choices add ease and flexibility. As well as standard direct mounting on the ceiling, it's easy to fit the projector onto an existing lighting track with the optional mount or use the optional stand to project from the floor.



Direct ceiling mounting



Lighting track mounting



Floor stand



## Combine projector and spotlight

The Epson LightScene projector becomes a spotlight at the push of a button on the remote. Create unique displays and experiences by combining still or moving content with the built-in spotlight mode, overlay effects and customised shape filters such as your brand logo.

## Monitor and control

Remotely control the status and basic functionality of up to 2,000 projectors at a time with Epson Projector Management software. This is compatible with various input sources including SD card, HDMI, LAN, and from tablet or mobile via the Epson iProjection app.

## Adjust images in a flash

Match the Epson LightScene projector to your venue with the multiple image setting function, powered zoom and remote control focus, and use keystone correction to produce perfect images from a range of positions.

## Versatile playback function

Upload and edit content, set up a schedule in advance or match content to the scene or time with Epson Projector Content Manager and web remote functionality. Or go computer-free and play engaging, informative content directly from an SD card with just one touch of the remote control.

## Synchronise projectors

Use up to 16 projectors to simultaneously play the same video playlist and project across even bigger spaces by using multiple projectors with edge blending functionality.



# Maximise image quality

The Epson LightScene projector combines exceptional image quality with fit-and-forget laser reliability underlined by a 5 year/ 20,000 hour warranty. Our acclaimed 3-chip, 3LCD technology delivers vivid image projection onto a range of different surfaces for thousands of virtually maintenance-free hours.

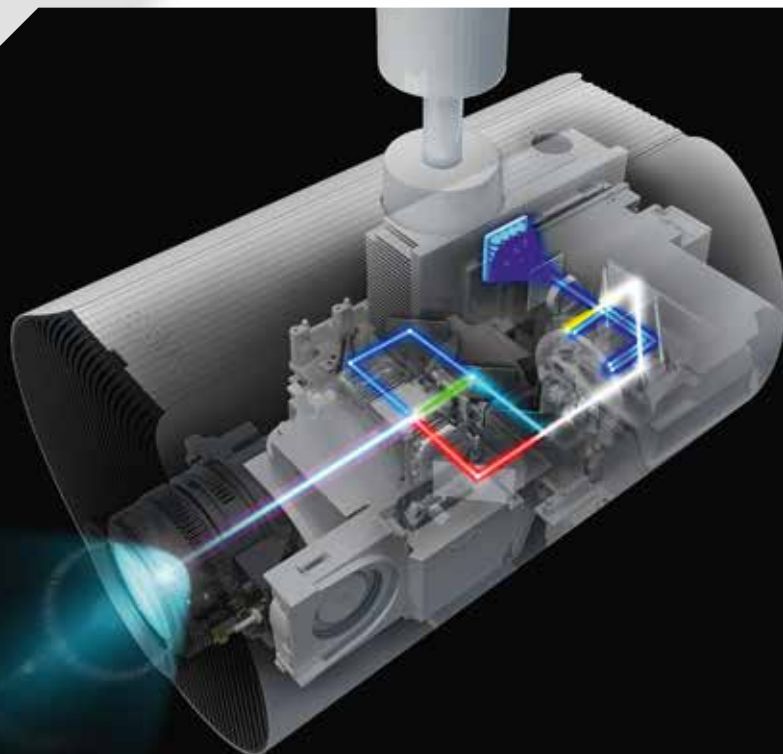
## Enjoy quality and reliability

The five-year, 20,000-hour warranty, coupled with Epson's durable, reliable inorganic phosphor wheel technology, means the LightScene EV-100 can be installed and virtually forgotten.

- 2,000 lumen laser lightsource
- WXGA resolution
- 2,500,000:1 contrast ratio
- Unique low impact spotlight design
- SD card playback
- Can be installed directly onto a lighting track

## Enhance performance through technology

Experience colour reproduction that is up to three times brighter<sup>1</sup>, a colour gamut that is up to three times wider<sup>1</sup> and a superior light efficiency with the Epson LightScene projector. There is no rainbow effect either, because unlike 1-chip DLP® models<sup>2</sup>, cutting-edge Epson 3LCD technology does not use a colour wheel.



**Up to**  
**3x** BRIGHTER  
COLOURS  
with Epson Projectors<sup>1</sup>

**EPSON**  
EXCEED YOUR VISION



Official Team Partner

**AMG**  
**PETRONAS**  
MOTORSPORT



**EPSON**  
**WORLD LEADER**  
**IN PROJECTORS**<sup>3</sup>



**Up to**  
**3X** **BRIGHTER**  
**COLOURS**  
with Epson Projectors<sup>1</sup>



**Better Products for a Better Future™**

<sup>1</sup>For more information, please visit [www.epson.co.uk/clo](http://www.epson.co.uk/clo) <sup>2</sup>DLP is a registered trademark or a trademark of Texas Instruments in the US and/or other countries. <sup>3</sup>Survey conducted by Futuresource Consulting Limited for the period from 2001 to 2017

For more information please contact:

Home users: 0343 90 37766  
Business users\*: 0871 42 37766  
Republic of Ireland: 01 436 7742

Or visit us at <https://www.epson.co.uk/contactus>

\* 10p per minute plus network extras.

Trademarks and registered trademarks are the property of Seiko Epson Corporation or their respective owners.  
Product information is subject to change without prior notice.

**EPSON®**